

NATURAL MATTE®

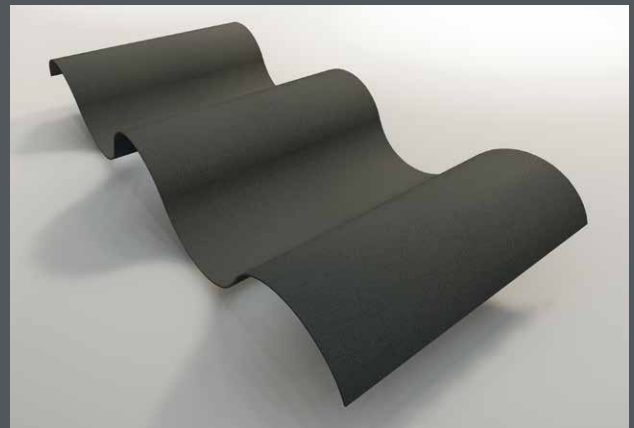




Natural Matte®

Subtle. Refined. Revolutionary.

Matte surfaces are all around us, from rugged coastal cliffs, to ancient volcanic mountains. These natural materials complement and enhance their surroundings through their balanced interaction with light. Capturing the diffuse light interaction of organic surfaces, Natural Matte® encompasses a range of six refined exterior finishes for metal roofing and siding.



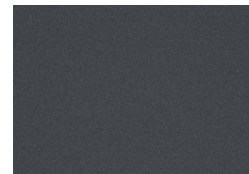


BASALT

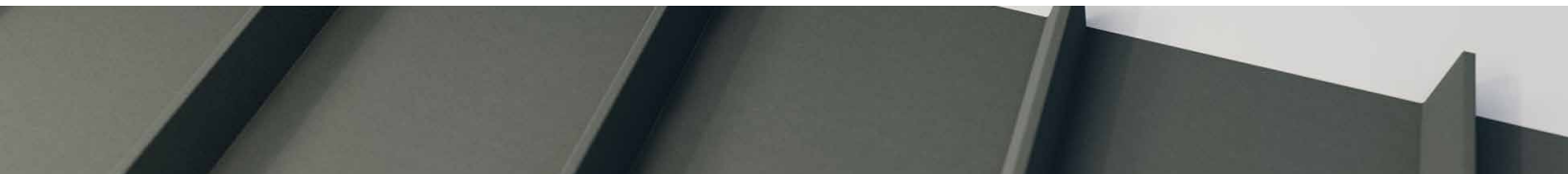
Depth and distinction in an everlasting hue.

An elegant hue with a modern twist, Basalt complements the textures and muted color palettes of surrounding natural elements.

Basalt promotes a deeper connection between the building's exterior and its surrounding environments through its captivating yet delicate hue.



BASALT
22824
SRI: 28
LRV: 14
GLOSS: 0.9
SHEEN: 2.1



GRAPHITE

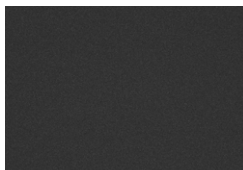
Understated and contemporary to elevate design flexibility.

A richer, versatile gray, Graphite provides the flexibility to fulfill visions of any scale. Gray without being boring, Graphite elevates exterior surfaces through its even diffusion of light.

Graphite exudes elegance in almost any environmental setting allowing it to pair with both traditional and modern design elements including stone or wood shake siding.



GRAPHITE
22825
SRI: 29
LRV: 9
GLOSS: 1.1
SHEEN: 2.4



ORE

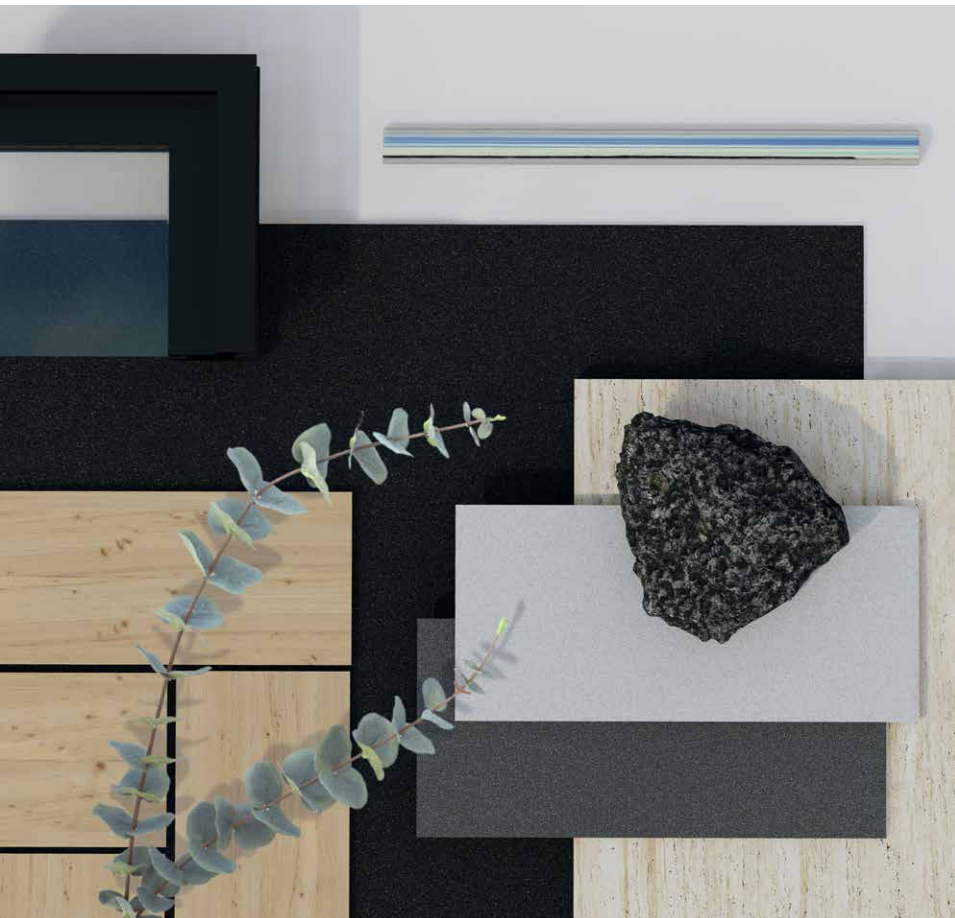
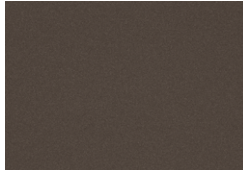
Rich and reserved with engaging warmth.

Balancing earthy tones without unwanted color saturation, Ore provides a complementary, balanced finish.

Ore's restrained earthy hue facilitates the accentuation of other natural materials such as wood and stone. This finish reinforces the creation of harmonious, naturalist, or nurturing color palettes.



ORE
22827
SRI: 28
LRV: 9
GLOSS: 1.1
SHEEN: 2.3

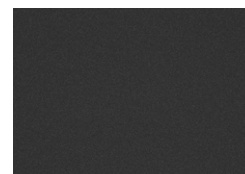


CARBON

An unprecedented, rich black.

Sleek and ageless, rich blacks form the cornerstone of modern building design. The delicate light interaction of Natural Matte, in concert with the depth of the Carbon, creates a commanding deep black in all lighting environments.

Carbon enhances the perceived depth of roof and wall surfaces. Developed to complement minimalist color palettes, single-color designs, or stark exterior contrasts.



CARBON
22826
SRI: 25
LRV: 5
GLOSS: 0.9
SHEEN: 3.8



Natural Matte®

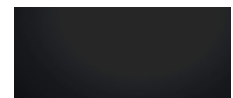
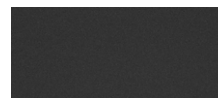
Natural Matte® is the ultimate low-gloss metal finish to elevate building exteriors.

Natural Matte uses light-disruptive paint technology to create the new benchmark for refined matte metal finishes. Natural Matte eliminates unwanted shine and glare without sacrificing color depth or finish durability. Designed for roofing, siding, or other exterior accent pieces, Natural Matte offers design flexibility like never before.

THE DIFFERENCE IS IN THE NUMBERS

Natural Matte®
CARBON

Standard
BLACK



GLOSS (60°)

0.9

21

SHEEN (85°)

3.8

25

Gloss and sheen represent the visible shine (a common concern with metal), observed from specific angles. Note how both these values are several times lower than the standard black color.



Style and Performance

Based on proven paint technology, Natural Matte offers a delicate satin texture, a 40-year finish warranty and a 30-year warranty against color fade. Combining a refined aesthetic with enduring performance, Natural Matte is the ideal finish for metal roof and siding products including standing seam roof panels and flush architectural wall profiles.

Request samples today at www.cmgmetals.com/contact



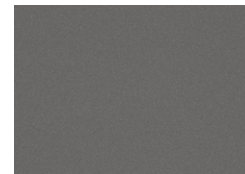


SHALE

A timeless, balanced gray for all applications.

Neutral grays provide a versatile hue and a logical choice for a sustainable, enduring designs. The elegant color and even diffusion of light promotes subtlety and sophistication.

Developed to pair with other timeless features including monochromatic colors or rich natural wood accents. Shale's lighter color and restrained hue enables other bold colors to excel without clashing.



SHALE
22823
SRI: 44
LRV: 23
GLOSS: 1.1
SHEEN: 2.3

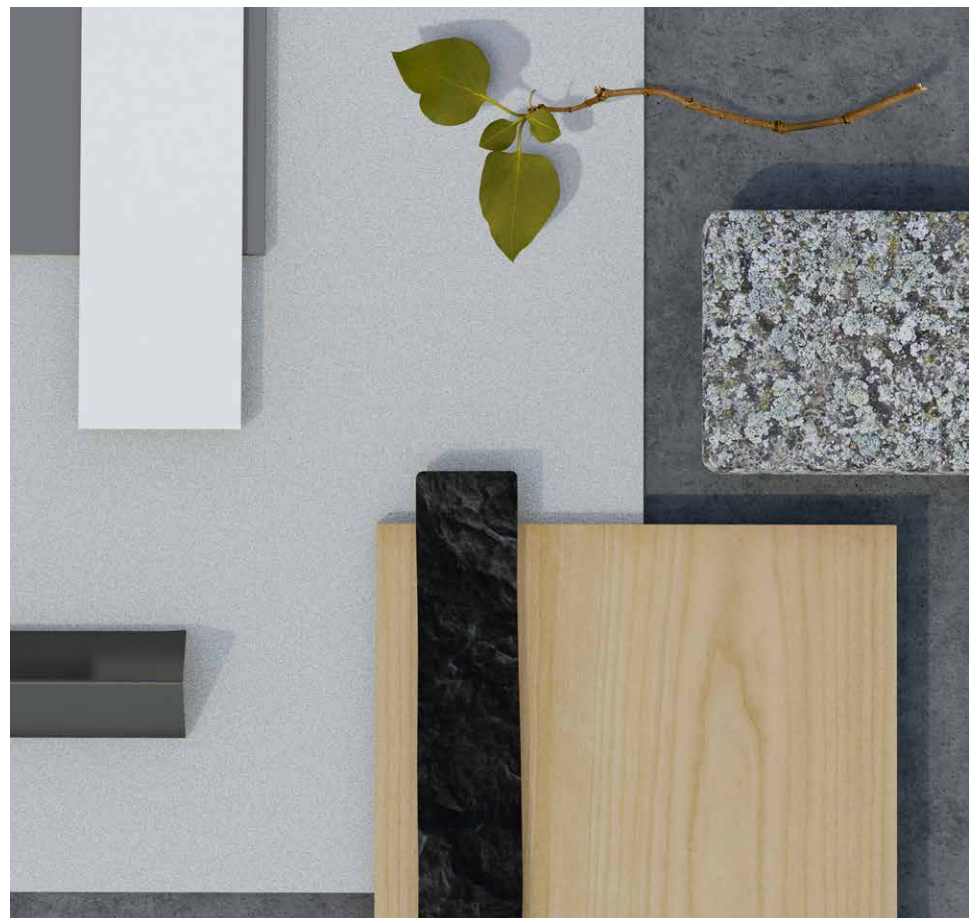


FROST

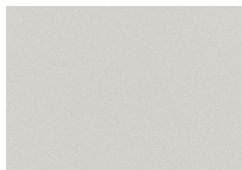
Crisp and pure, promoting simplicity and focus.

Harnessing the cleansing appeal of the first winter snow, Frost provides a clean yet purposeful finish.

Frost promotes the creation of welcoming, minimalist color palettes and facilitates harmonious color contrasts. Its crisp tone enhances the use of bold color accents.



FROST
22828
SRI: 87
LRV: 79
GLOSS: 1.9
SHEEN: 2.2



COATED METALS GROUP



See the Natural Matte® difference at:
www.cmgmetals.com/product/natural-matte

Coated Metals Group

Phone: (800) 784-0356

Email: info@cmgmetals.com

Address: 300 Yard Drive, Verona, WI 53593

FINISHES DEVELOPED BY



Phone.
(800) 784-0356



Email.
info@cmgmetals.com



Address.
300 Yard Drive, Verona, WI 53593

WWW.CMGMETALS.COM